

# Cast Iron Roll Specifications

## GRADE: High Chrome Iron Sleeves and Rollers

**Union Electric Åkers**  
Forged and Cast Rolls



### DESCRIPTION

#### SINGLE POUR

The material is basically a white iron with a chromium content of between 14% and 20%. This chromium addition together with controlled amounts of nickel and molybdenum results in a high level of hardenability.

High Chrome Iron Sleeves and Rollers are heat treated to produce discontinuous, highly wear resistant iron/chromium carbides in a matrix which can be varied from spheroidal pearlite through to high hardness martensite according to the requirements of the application.

The high hardenability of High Chrome Iron enables the hardness to be made virtually consistent across any given roll section so that the rolls are well suited to sleeve and roller applications.

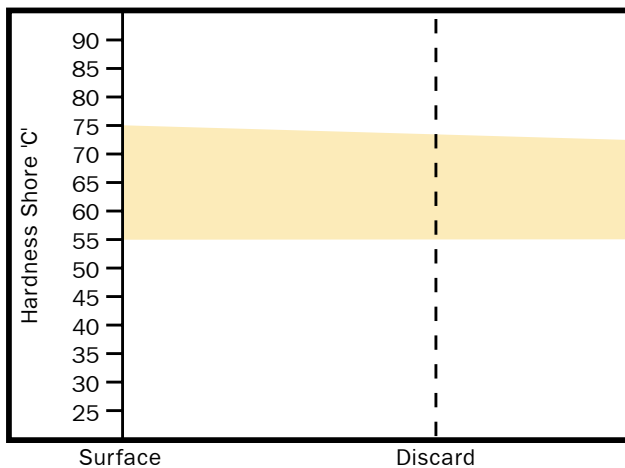
### APPLICATIONS

Product	Type of Mill	Position
Beams	Universal	Horizontal Sleeve

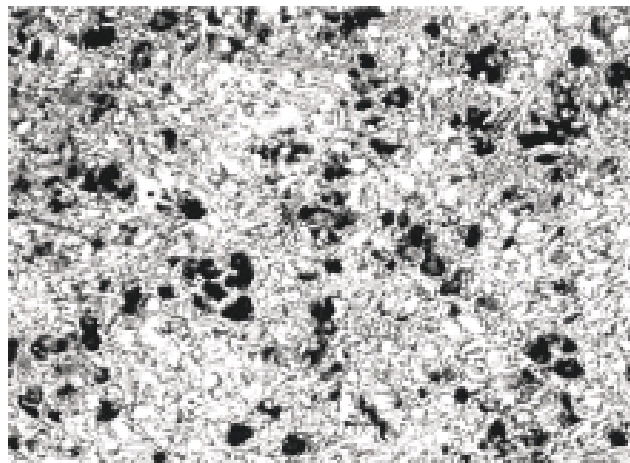
### TYPICAL MECH. PROPERTIES

Property	N/mm <sup>2</sup>
Tensile Strength	850
Bending Strength	1300

### DEPTH OF HARDNESS



### MICROSTRUCTURE X100



### AIM CHEMISTRY (WT%)

Code	Leeb E	Shore C	C	Si	Mn	Ni	Cr	Mo
16VS	680/730	65/73	2.3/2.9	0.4/1.0	0.8/1.4	0.5/1.5	14/20	0.5/1.5