

# Cast Iron Roll Specifications

## GRADE: SGXTRA

**Union Electric Åkers**  
Forged and Cast Rolls



### DESCRIPTION

SGXTRA exhibits properties associated with both traditional acicular and pearlitic qualities. Typically, the graphite spheroids are surrounded by a layer of ferrite giving a characteristic 'bull's eye' effect.

The material, whilst having mechanical properties usually found in acicular grades, exhibits enhanced resistance to fire cracking and thermal failure. This is produced by careful control of alloying elements, particularly carbon, silicon and molybdenum as well as by comprehensive heat treatment.

The high strength and thermal resistance of SGEXTRA make it an ideal roll material for use in roughing applications where thermal duty is severe.

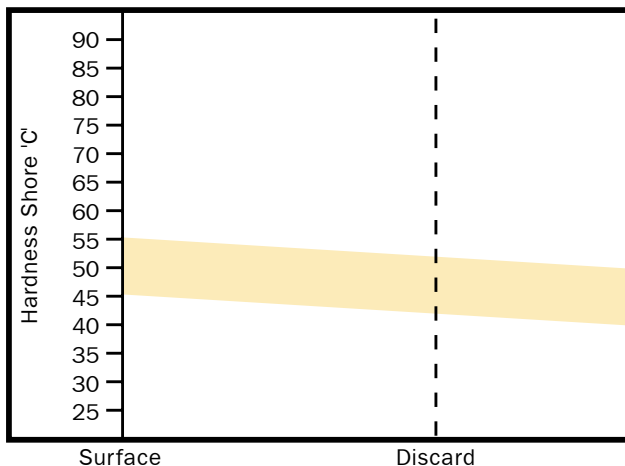
### APPLICATIONS

Product	Type of Mill	Position
Medium Section		All Stands
Heavy Section		All Stands
Wide Strip	Roughing	Vertical Edgers

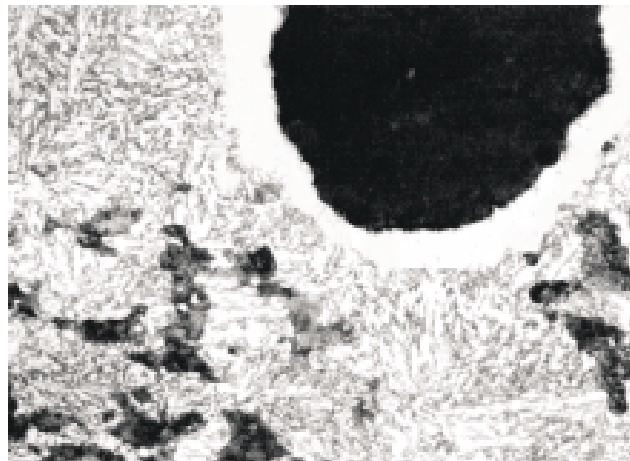
### TYPICAL MECH. PROPERTIES

Property	N/mm <sup>2</sup>
Tensile Strength	425
Bending Strength	850

### DEPTH OF HARDNESS



### MICROSTRUCTURE X500



### AIM CHEMISTRY (WT%)

Code	Leeb E	Shore C	C	Si	Mn	Ni	Cr	Mo
SGXTRA	540/620	42/55	3.0/3.5	1.3/2.5	0.5/1.0	1.5/3.2	0.4 max	0.4/1.0